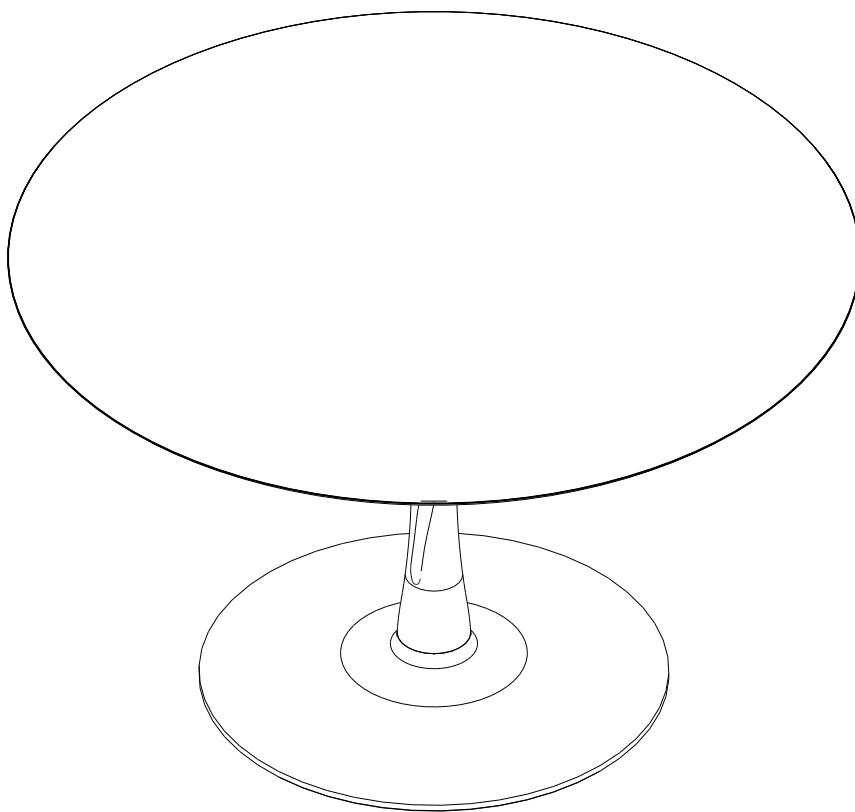


OAK TORSION DINING TABLE Ø90 / Ø127

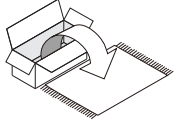
CODE	DESCRIPTION
50012	OAK TORSION DINING TABLE - BLACK 127/127/76
50013	OAK TORSION DINING TABLE - BLACK 90/90/76
50018	OAK TORSION DINING TABLE 90/90/76
50019	OAK TORSION DINING TABLE 127/127/76



OAK TORSION DINING TABLE Ø90 / Ø127

ASSEMBLY INSTRUCTIONS FOR DINING TABLE INSTALLATION

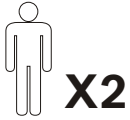
NOTE



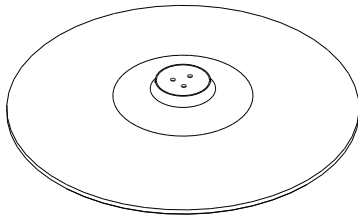
- CAREFULLY OPEN THE CARTON,
- REMOVE CONTENTS AND LAY OUT ON CARPET OR THE PACKAGING CARTON BOX OR OTHER PROTECTIVE SURFACE TO AVOID DAMAGE.
- CHECK PACKAGE CONTENTS TO ASSURE ALL THE NECESSARY HARDWARE AND PARTS ARE RECEIVED UNDAMAGED.
- DO NOT USE DAMAGE OR DEFECTIVE PARTS/HARDWARE.
- CONTACT ETHNICRAFT FOR ANY MISSING PART AND /OR HARDWARE.



- READ THE ASSEMBLY INSTRUCTION BEFORE INSTALLATION AND CAREFULLY FOLLOW THE INSTRUCTION GIVEN.
- SEEK THE ADVICE OF A PROFESSIONAL IF YOU ARE NOT FAMILIAR WITH THESE INSTALLATIONS OR HAVE ANY DOUBTS ABOUT THE SAFETY OF THIS INSTALLATION.



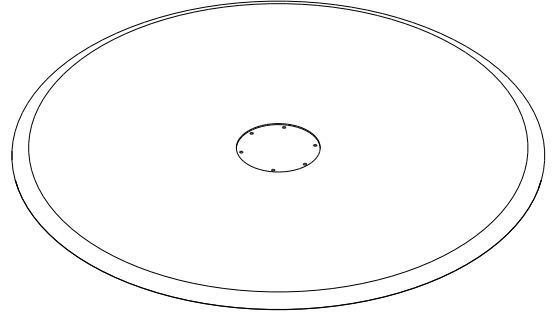
- IT IS ADVISABLE TO DO THIS ASSEMBLY WITH MINIMUM OF 2 PERSONS.



C LEG BASE 1piece

CODE	DESCRIPTION
P4639	LEG BASE - BLACK FOR TABLE Ø127
P4662	LEG BASE - BLACK FOR TABLE Ø90
P4665	LEG BASE FOR TABLE Ø90
P4659	LEG BASE FOR TABLE Ø127

PARTS TO ASSEMBLE



A TABLE TOP 1piece

CODE	DESCRIPTION
P4644	TABLE TOP - BLACK Ø127
P4660	TABLE TOP - BLACK Ø90
P4663	TABLE TOP Ø90
P4658	TABLE TOP Ø127



B CENTER LEG 1piece

CODE	DESCRIPTION
P4643	CENTER LEG - BLACK FOR TABLE Ø127
P4661	CENTER LEG - BLACK FOR TABLE Ø90
P4664	CENTER LEG FOR TABLE Ø90
P4659	CENTER LEG FOR TABLE Ø127

HARDWARE (Attached to Leg Base)

<p>H0840 Metal Plate (Small) (1pc)</p>	<p>H0839 Metal Plate (Large) (1pc)</p>
<p>H0841 JCBC Screw M8x80 (3pcs)</p>	

HARDWARE ENCLOSED

<p>H0842 JCBC Screw M8x16 (9pcs)</p>

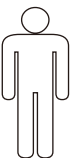
TOOL (Included in package)

<p>H0880 L KEY (1pc)</p>

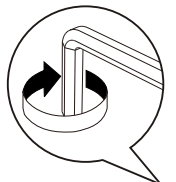
SYMBOLS



DIRECTION


NUMBER OF
PERSONS NEEDED

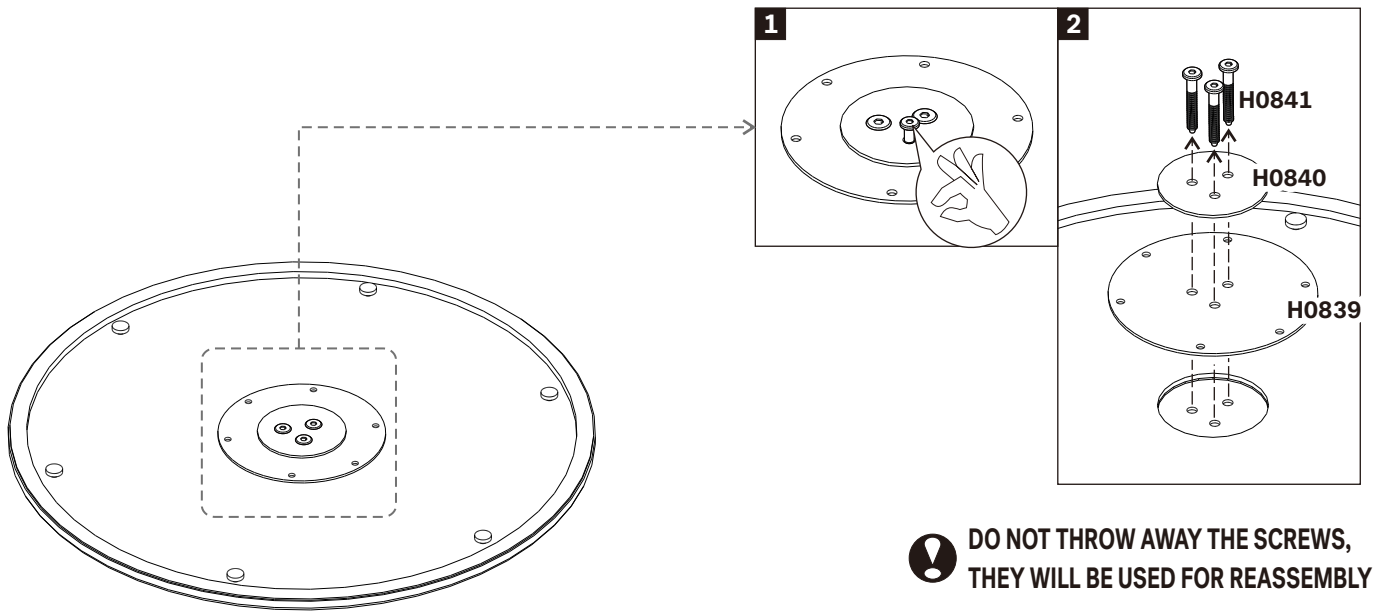

USE HAND


USE L KEY
TO TIGHTEN

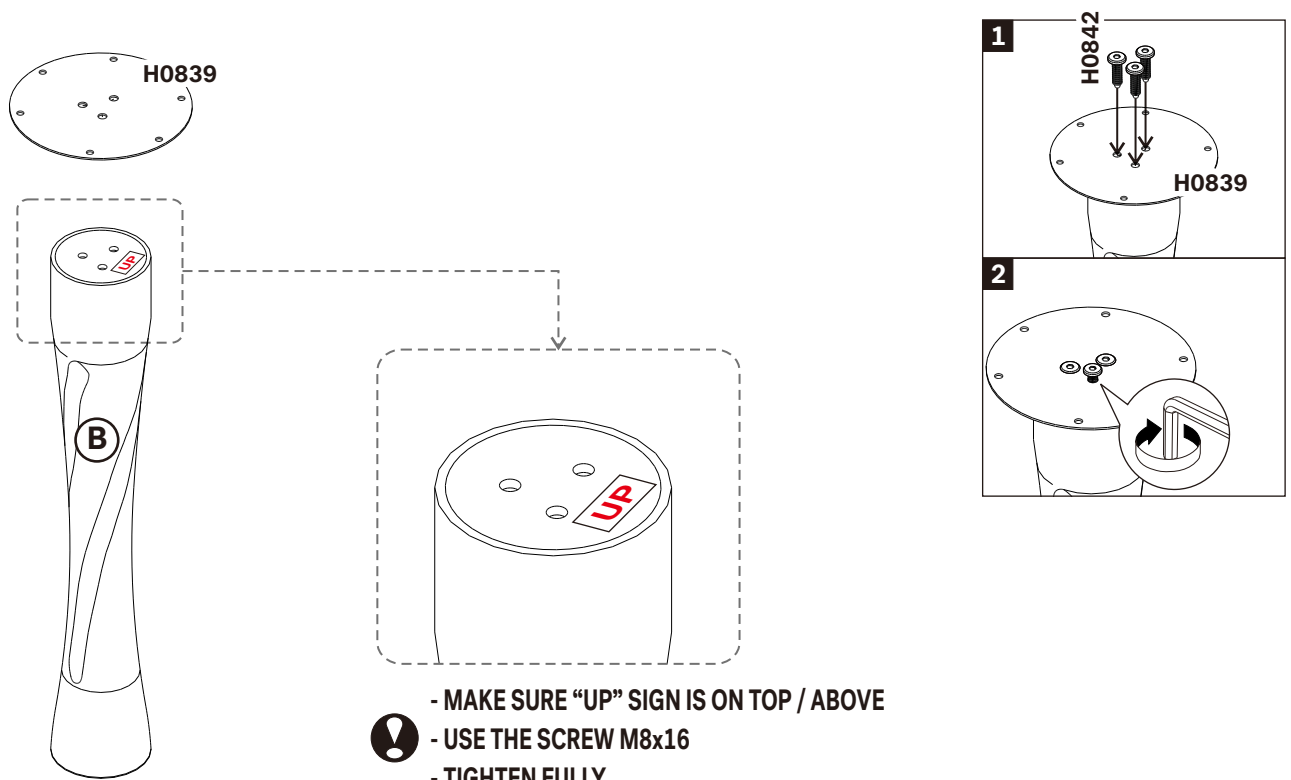
OAK TORSION DINING TABLE Ø90 / Ø127

ASSEMBLY INSTRUCTIONS FOR DINING TABLE INSTALLATION

A. DISMANTLING METAL PLATE & SCREWS FROM LEG BASE



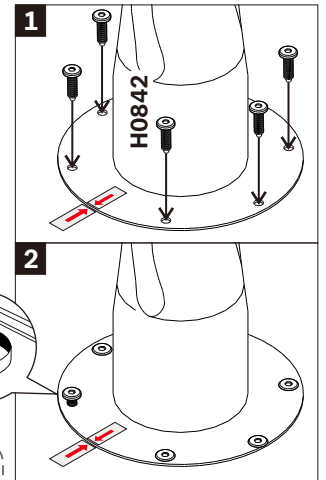
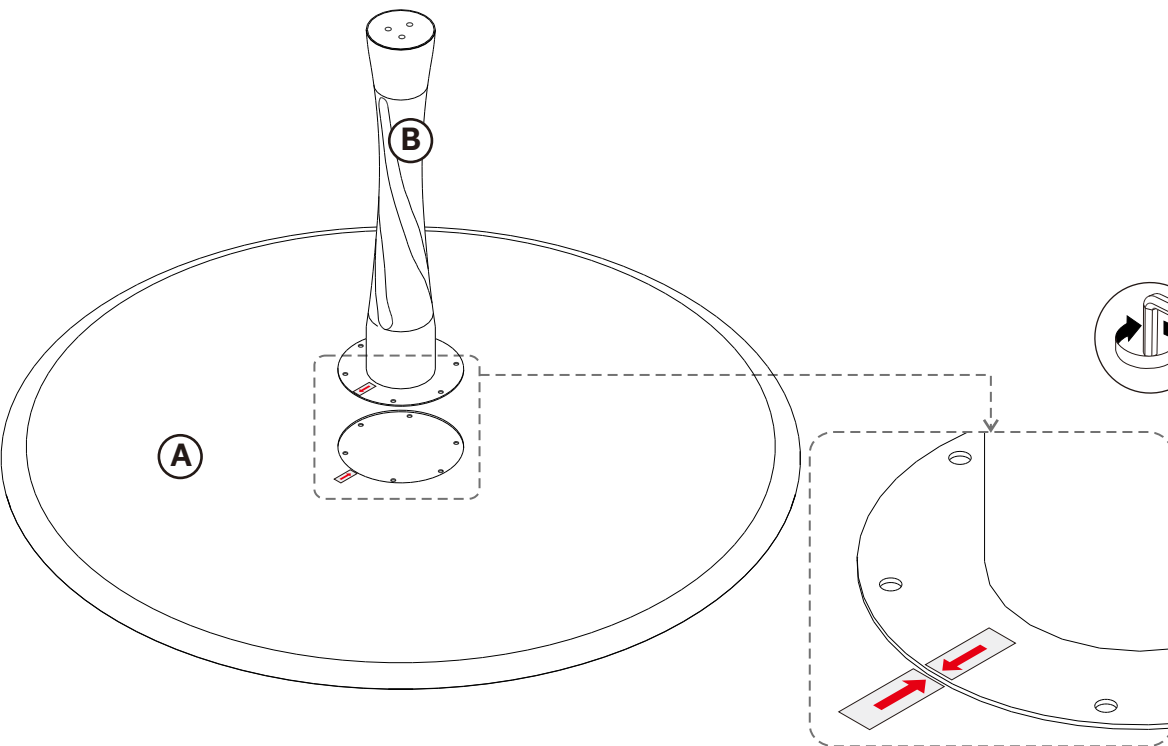
B. INSTALLING METAL PLATE (LARGE) TO THE CENTER LEG



OAK TORSION DINING TABLE Ø90 / Ø127

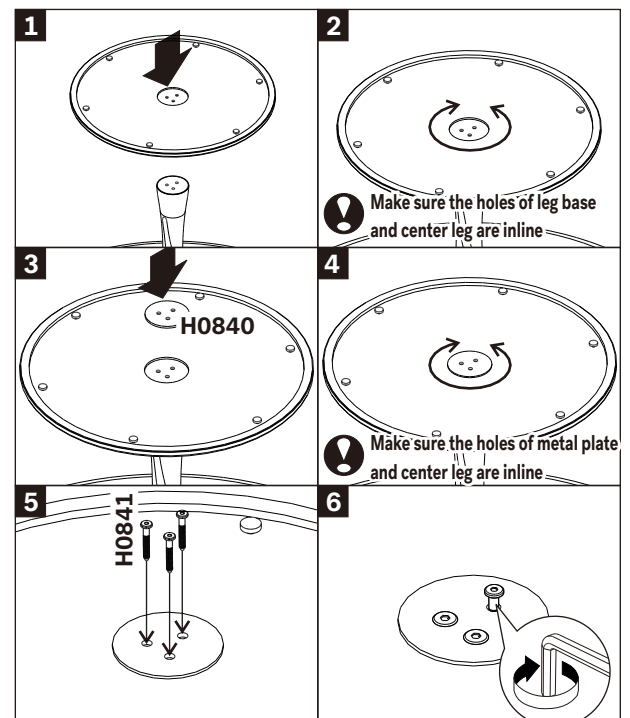
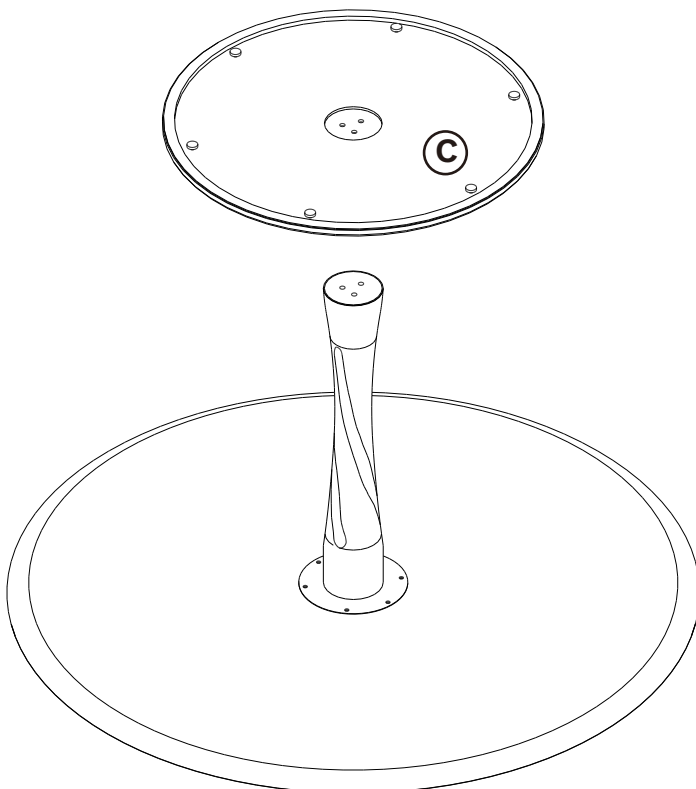
ASSEMBLY INSTRUCTIONS FOR DINING TABLE INSTALLATION

C. INSTALLING CENTER LEG TO TABLE TOP



- ! - ALWAYS REFER TO STICKER
- ! - USE SCREW M8x16
- ! - TIGHTEN FULLY

D. INSTALLING LEG BASE

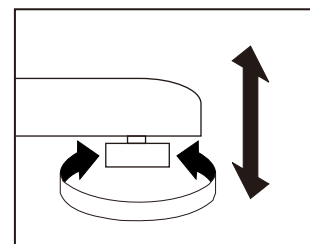
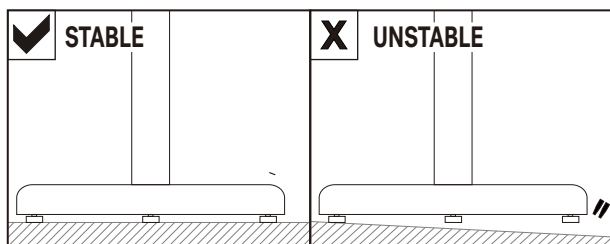
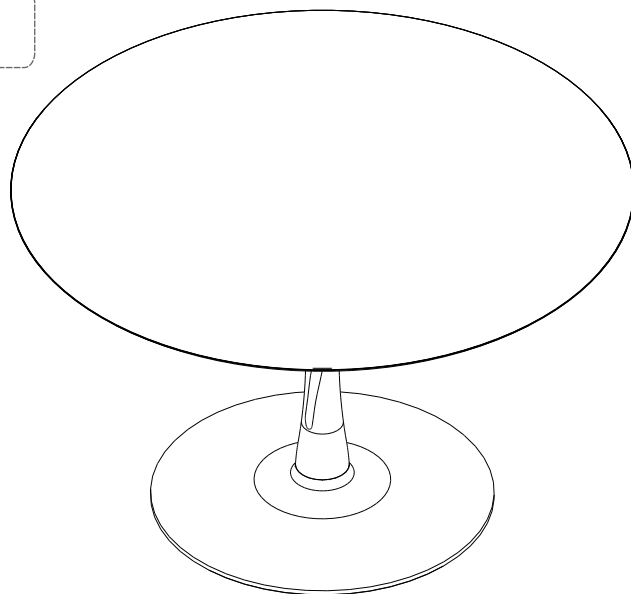
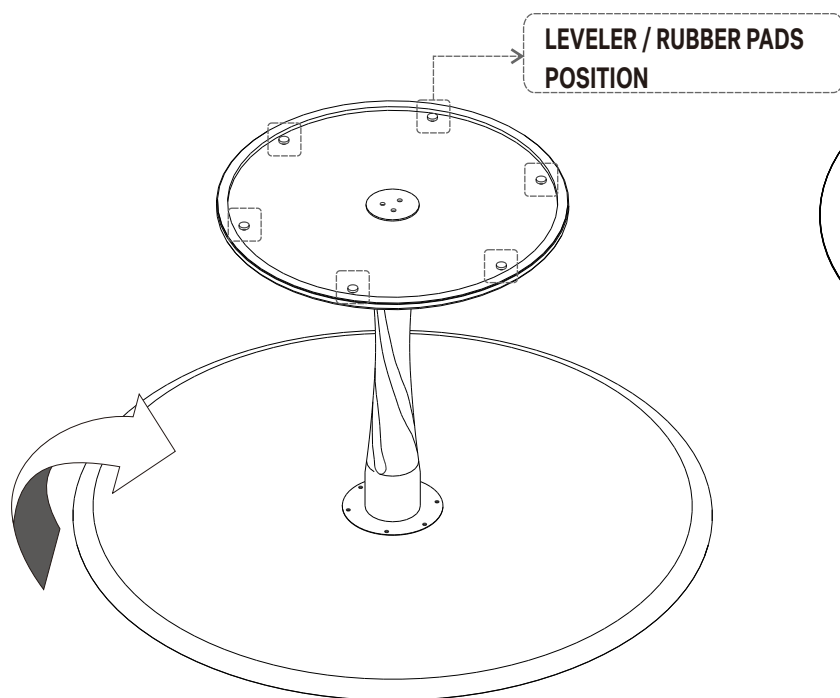


- ! - USE SCREW M8x50
- ! - TIGHTEN FULLY

OAK TORSION DINING TABLE Ø90 / Ø127

ASSEMBLY INSTRUCTIONS FOR DINING TABLE INSTALLATION

E. ADJUSTING RUBBER PAD



NOTE :
THIS IS A COMPULSORY ACTION TO MAKE SURE
ALL OF THE RUBBER PADS TOUCH THE GROUND!