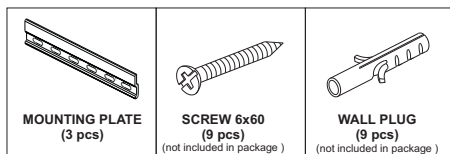


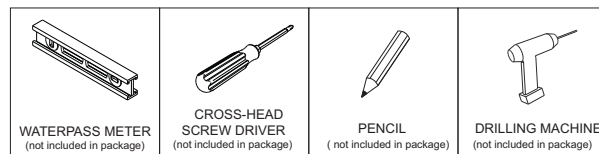
## 58034-58035 OAK CADENCE BATHROOM MIRROR CABINET

### ASSEMBLY INSTRUCTION FOR HANGING HARDWARE INSTALLATION

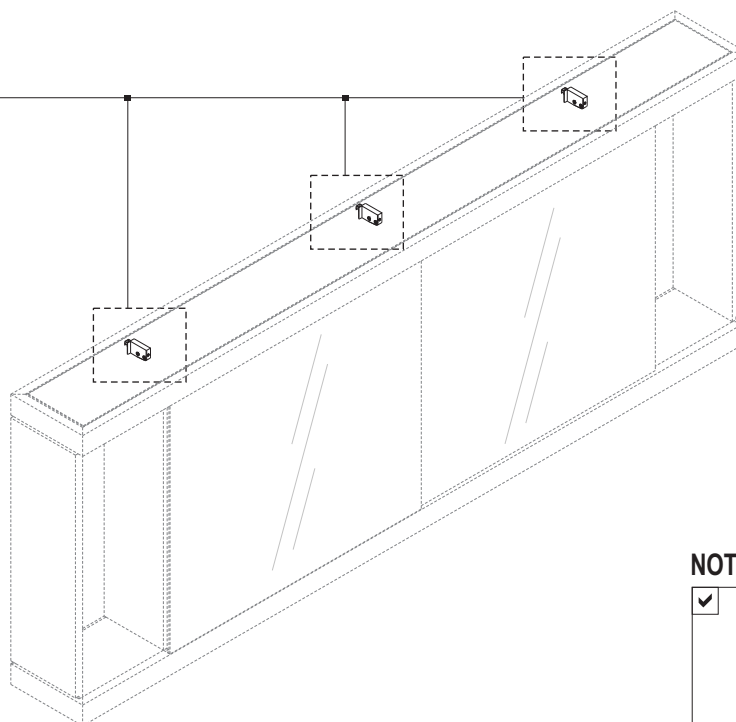
#### HARDWARES



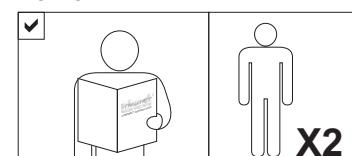
#### TOOLS



#### HANGING HARDWARES



#### NOTICE



#### SYMBOLS



DIRECTION



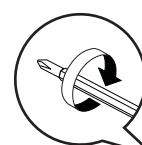
NUMBER OF  
PERSON NEEDED



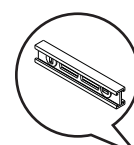
USE DRILLING  
MACHINE



USE PENCIL  
TO MARK

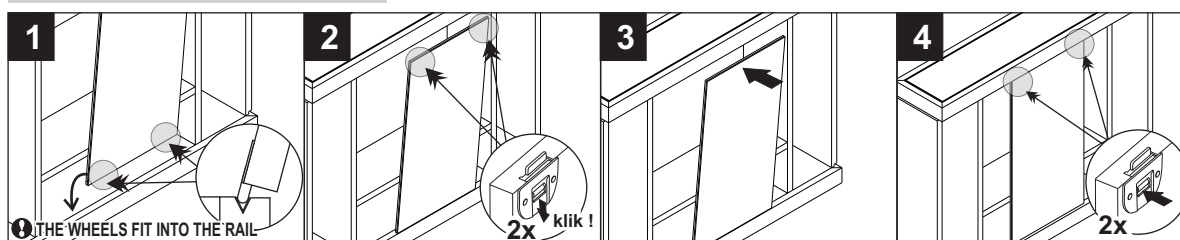


USE CROSS-HEAD  
SCREW DRIVER  
TO TIGHTEN

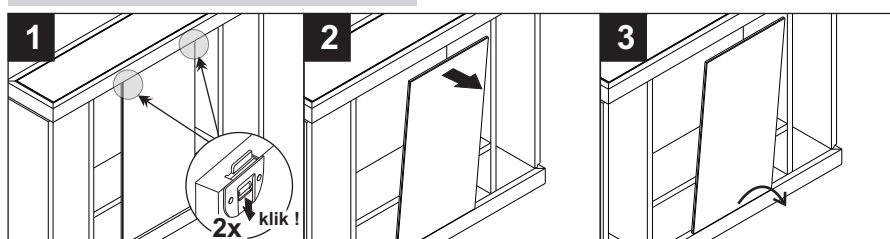


USE WATER PASS  
METER

#### INSTALL SLIDING DOOR

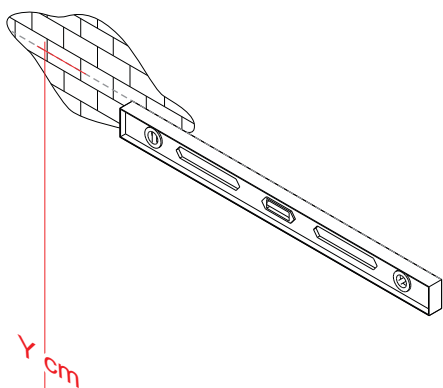


#### UNINSTALL SLIDING DOOR



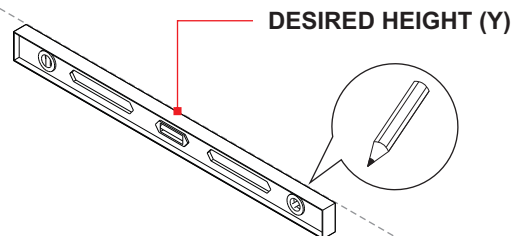
58034-58035 OAK CADENCE BATHROOM MIRROR CABINET  
ASSEMBLY INSTRUCTION FOR HANGING HARDWARE INSTALLATION

**A. SET DESIRED HEIGHT**



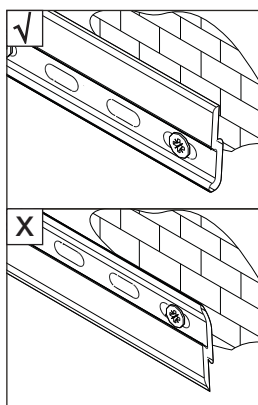
**! USE WATERPASS FOR ALIGNMENT**  
**Y = DESIRED HEIGHT OF THE ITEM**

**B. MAKE MARKS FOR DRILLING POINT**

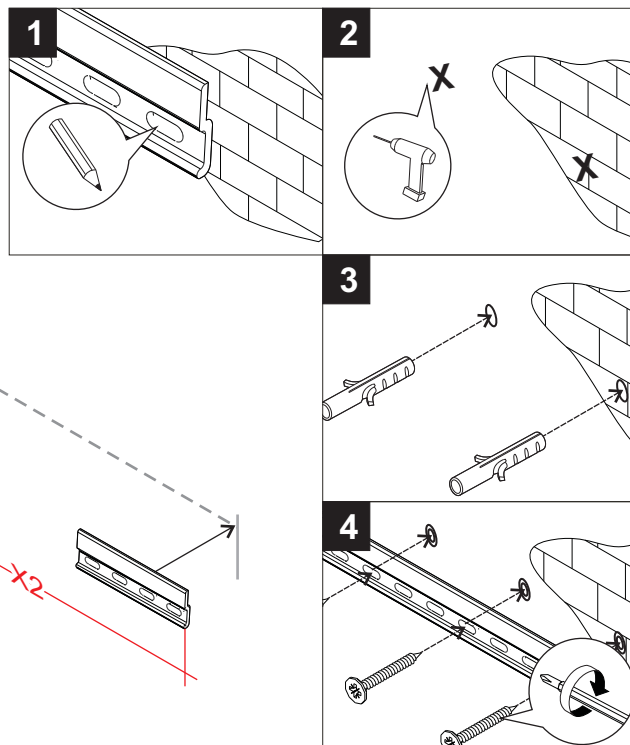
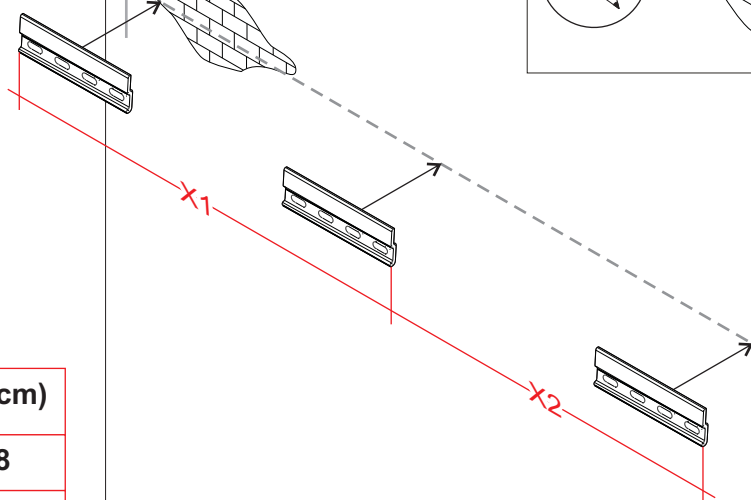


**C. INSTALLING MOUNTING PLATES**

**NOTE :**

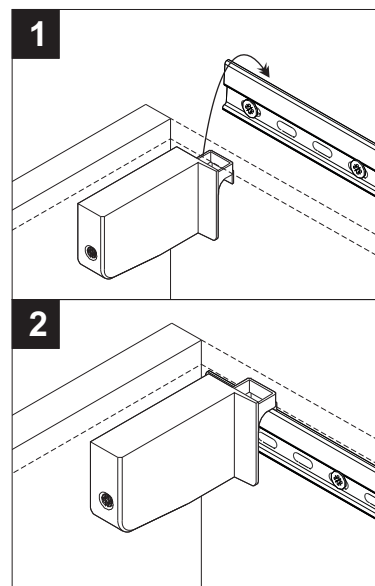
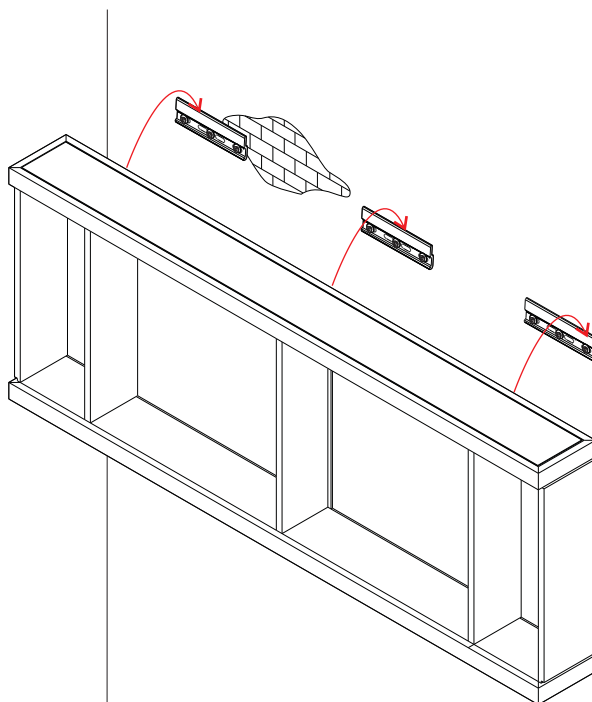
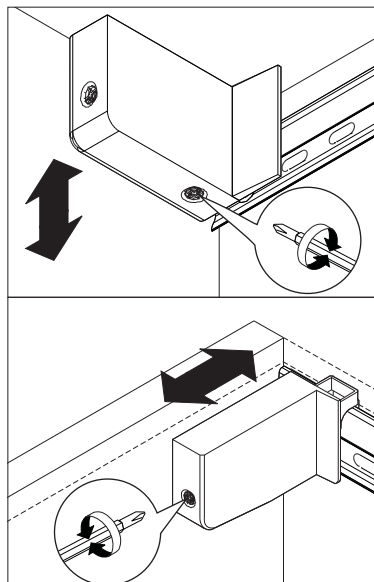


| Code  | X1 (cm) | X2 (cm) |
|-------|---------|---------|
| 58034 | 43      | 48      |
| 58035 | 63      | 68      |



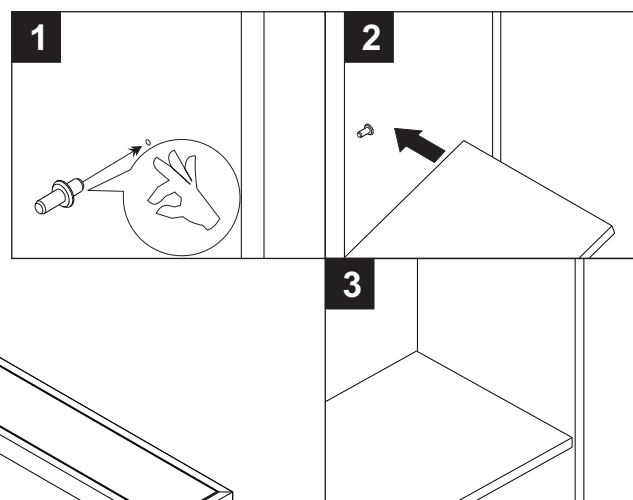
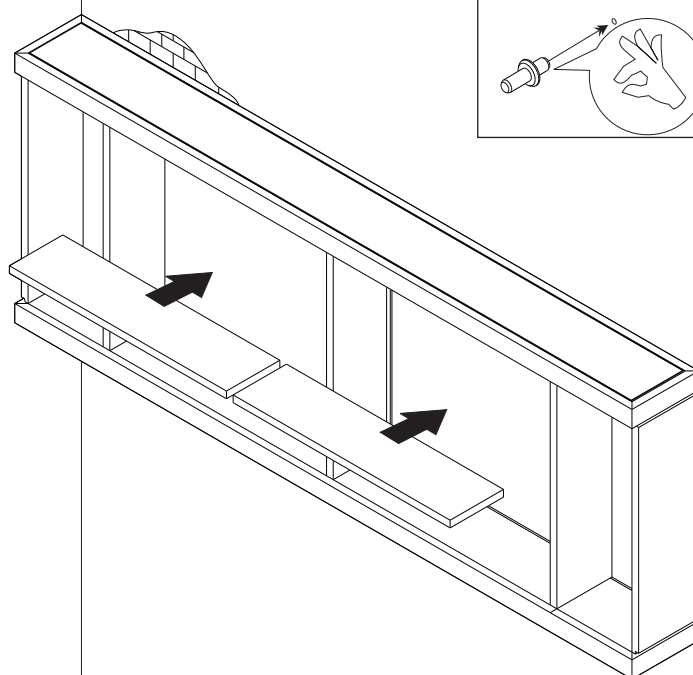
58034-58035 OAK CADENCE BATHROOM MIRROR CABINET  
ASSEMBLY INSTRUCTION FOR HANGING HARDWARE INSTALLATION

**D. INSTALLING ITEM TO THE MOUNTING PLATES**



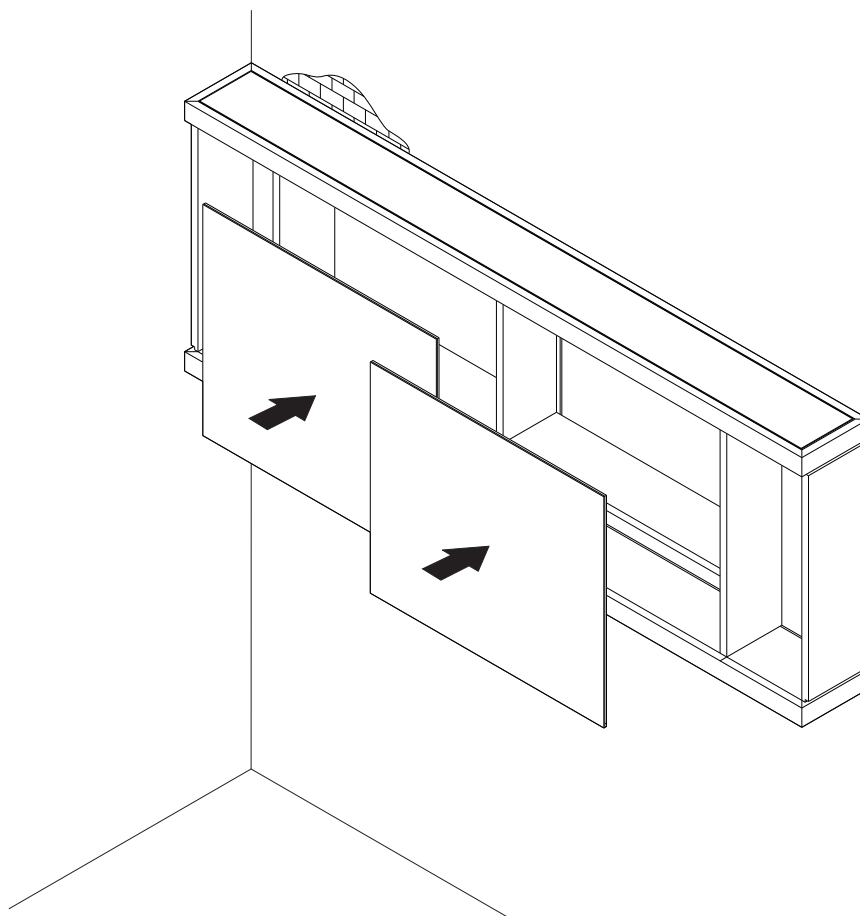
- ! - ADJUST IF NECESSARY**  
**- UNINSTALL THE DOORS & ADJUSTABLE SHELVES**  
**BEFORE INSTALLING ITEM TO THE MOUNTING PLATE**

**E. INSTALLING ADJUSTABLE SHELVES**



58034-58035 OAK CADENCE BATHROOM MIRROR CABINET  
ASSEMBLY INSTRUCTION FOR HANGING HARDWARE INSTALLATION

**F. INSTALLING THE SLIDING DOORS**



**G. FINISH**

