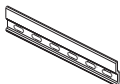
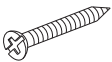
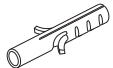
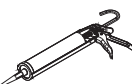
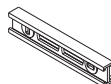





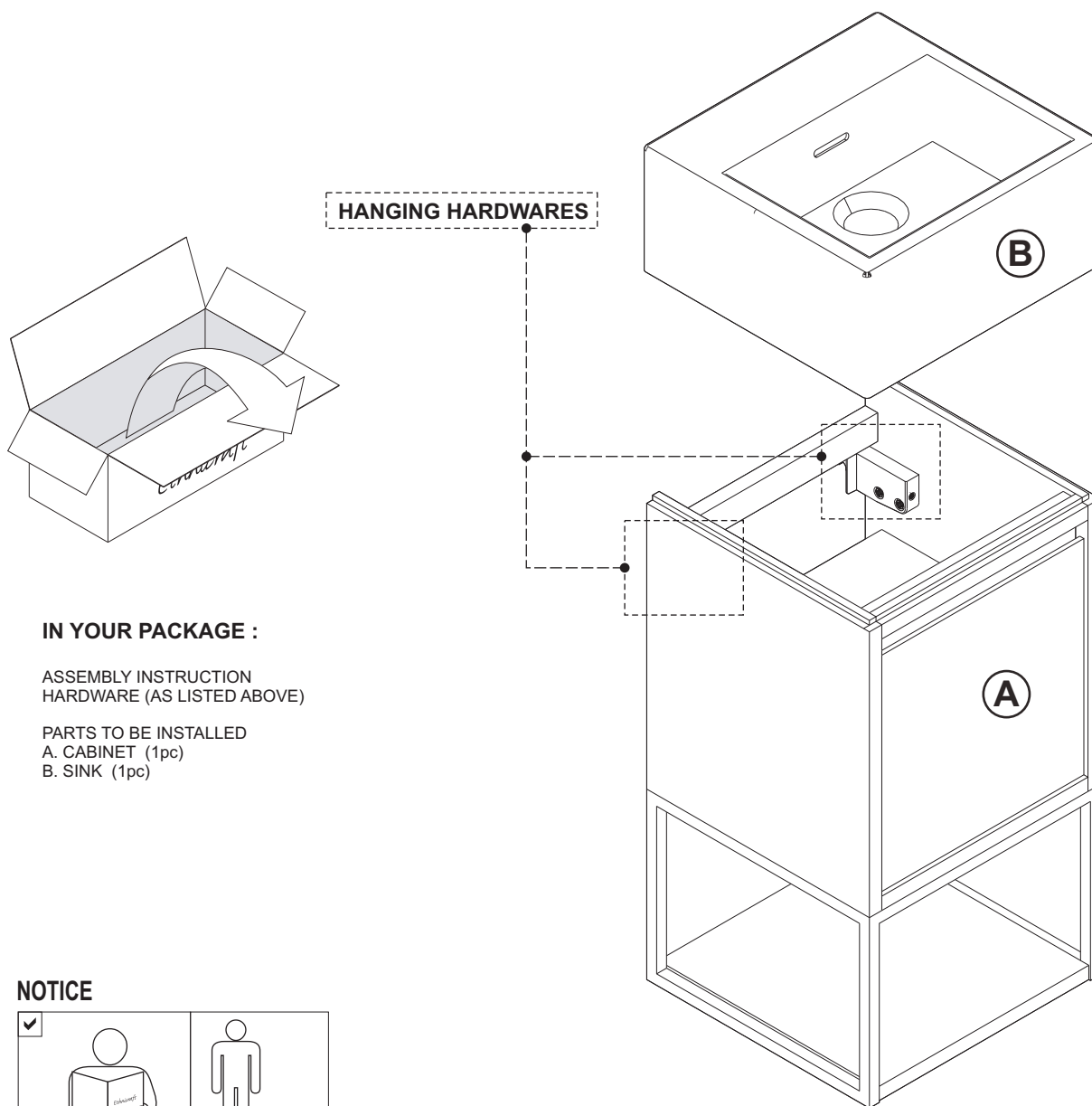
58151 OAK JUNIOR BATHROOM CABINET ASSEMBLY INSTRUCTION FOR HANGING CABINET INSTALLATION

HARDWARES

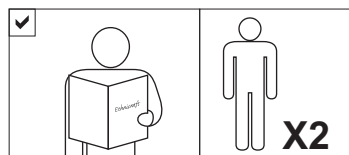
			
MOUNTING PLATE (1 pc)	SCREW 6x60 (3 pcs) (not included in package)	WALL PLUG (3 pcs) (not included in package)	TRANSPARENT SILICONE GLUE (not included in package)

TOOLS

			
SPIRIT LEVEL (not included in package)	CROSS-HEAD SCREW DRIVER (not included in package)	PENCIL (not included in package)	DRILLING MACHINE (not included in package)



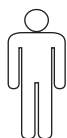
NOTICE



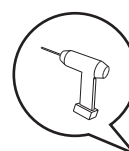
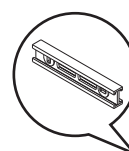
SYMBOLS



DIRECTION


NUMBER OF
PERSON NEEDED

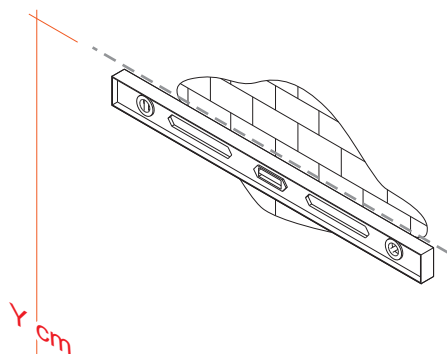
USE PENCIL
TO MARK

USE SCREW DRIVER
TO TIGHTEN

USE DRILLING
MACHINE

USE WATER PASS
METER

58151 OAK JUNIOR BATHROOM CABINET ASSEMBLY INSTRUCTION FOR HANGING CABINET INSTALLATION

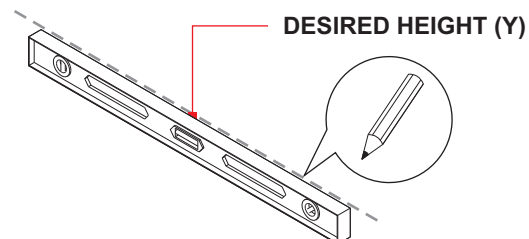
INSTALLING HANGING CABINET

A. SET DESIRED HEIGHT



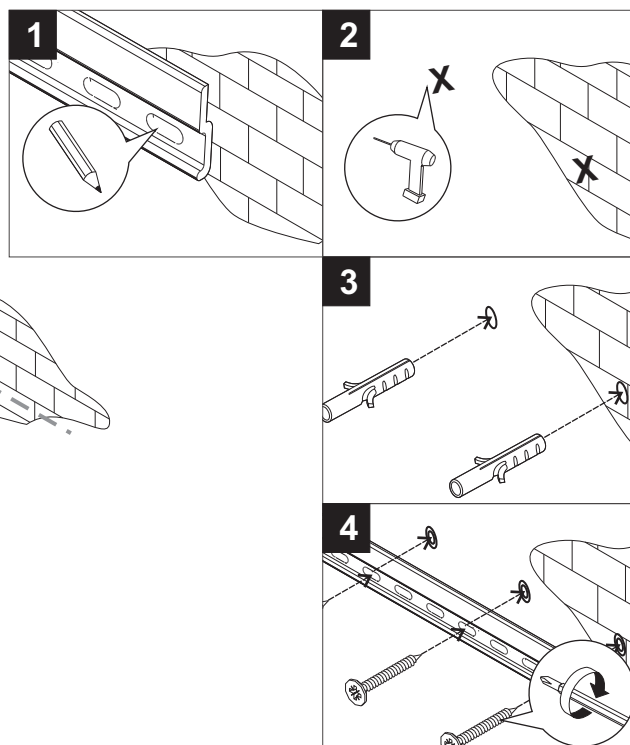
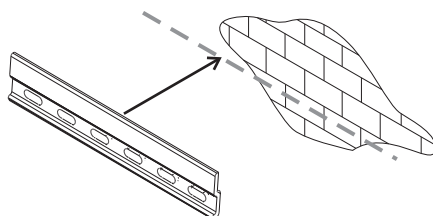
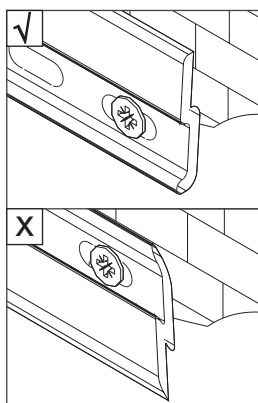
! USE SPIRIT LEVEL FOR ALIGNMENT
Y = DESIRED HEIGHT OF THE ITEM

B. MAKE MARKS FOR DRILLING POINT



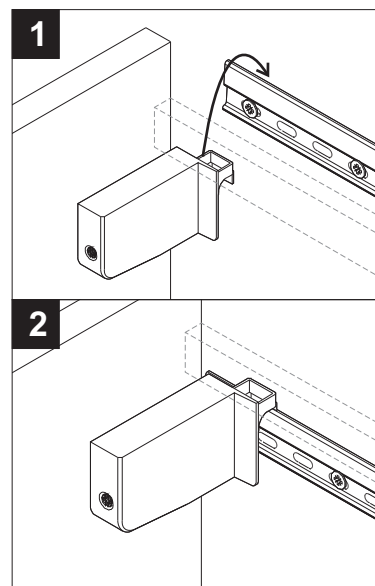
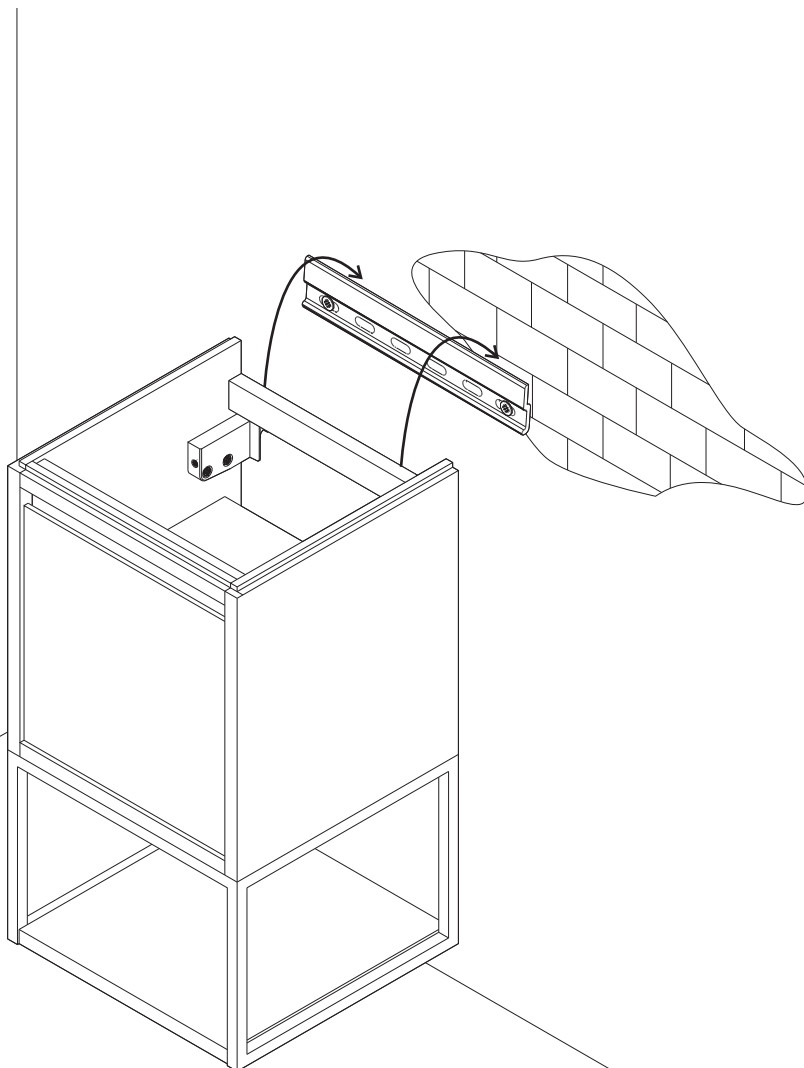
C. INSTALLING MOUNTING PLATE

NOTE :

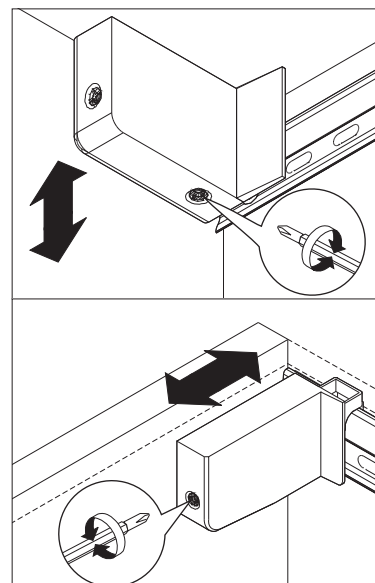


58151 OAK JUNIOR BATHROOM CABINET ASSEMBLY INSTRUCTION FOR HANGING CABINET INSTALLATION

D. INSTALLING CABINET TO THE MOUNTING PLATE



LEVELLING THE HANGING HARDWARES

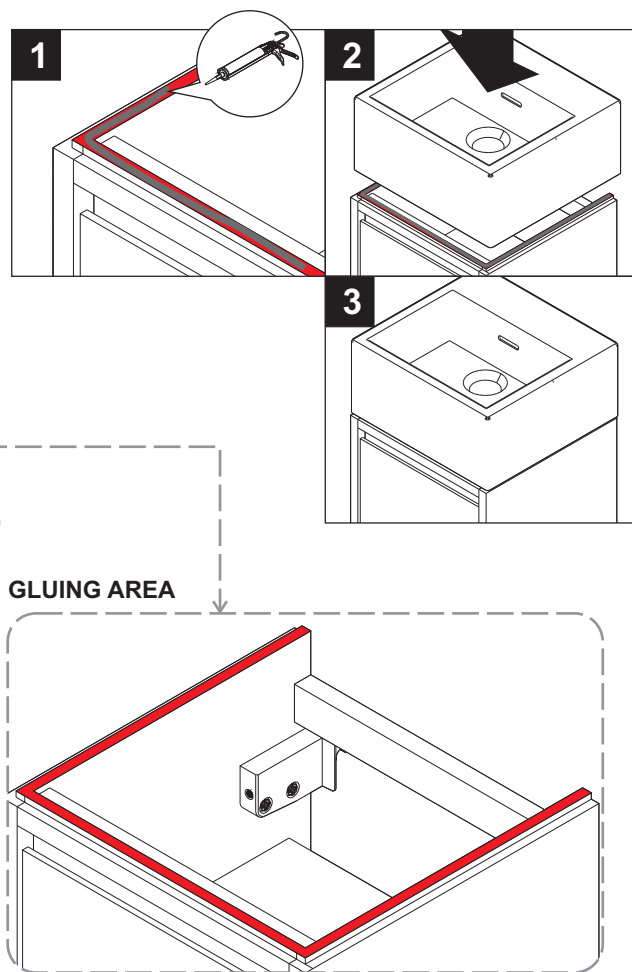
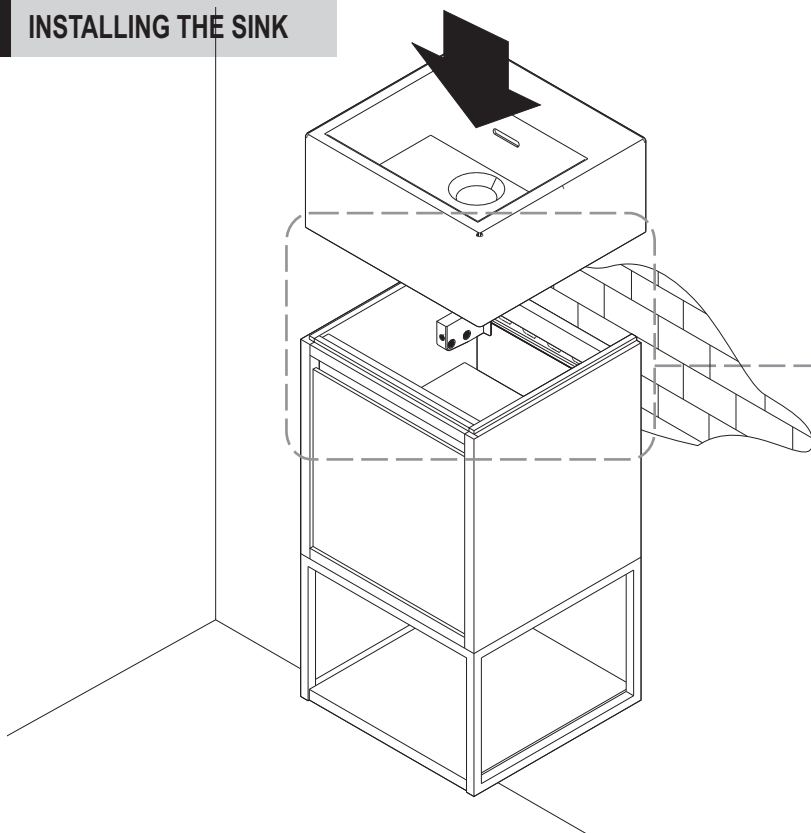


⚠️ ADJUST IF NECESSARY

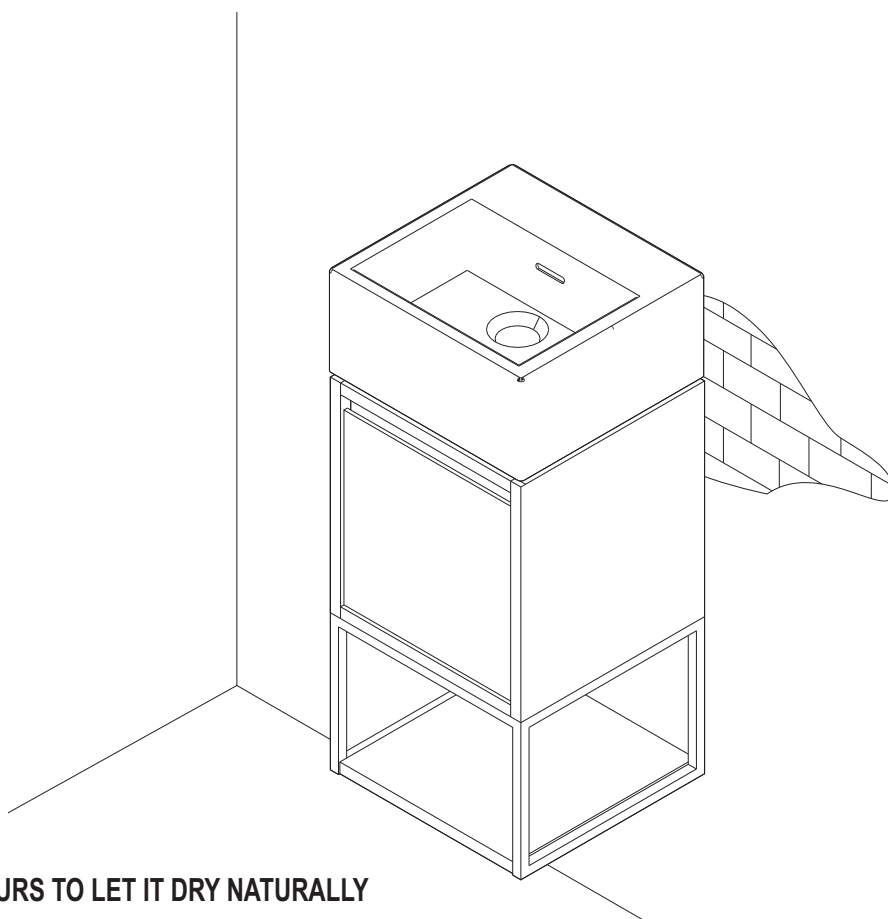
58151 OAK JUNIOR BATHROOM CABINET ASSEMBLY INSTRUCTION FOR HANGING CABINET INSTALLATION

SINK INSTALLATION

A. INSTALLING THE SINK



B. FINISH

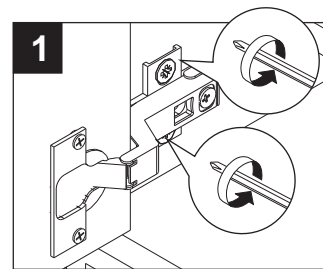
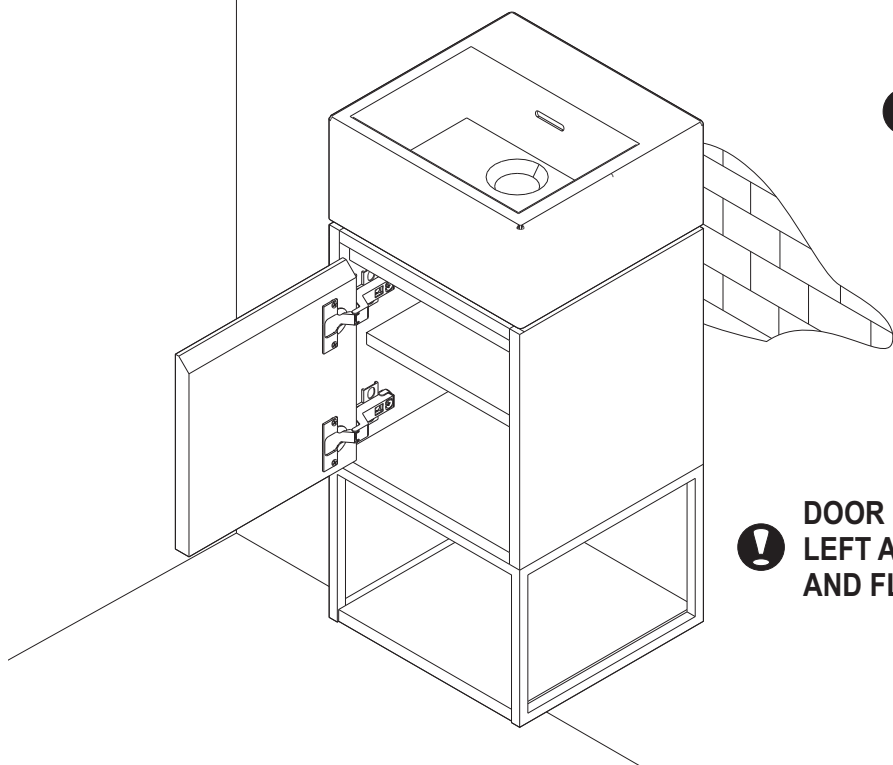


! WAIT 24 HOURS TO LET IT DRY NATURALLY

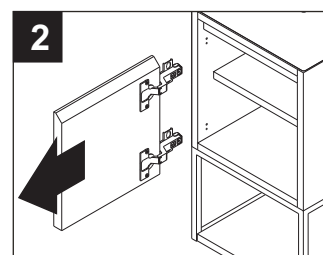
58151 OAK JUNIOR BATHROOM CABINET ASSEMBLY INSTRUCTION FOR HANGING CABINET INSTALLATION

CHANGING DOOR DIRECTION

A. DETACHING THE DOOR

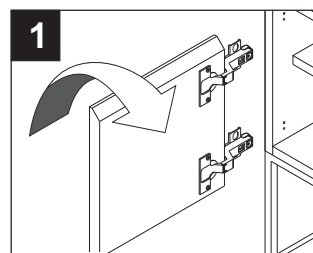
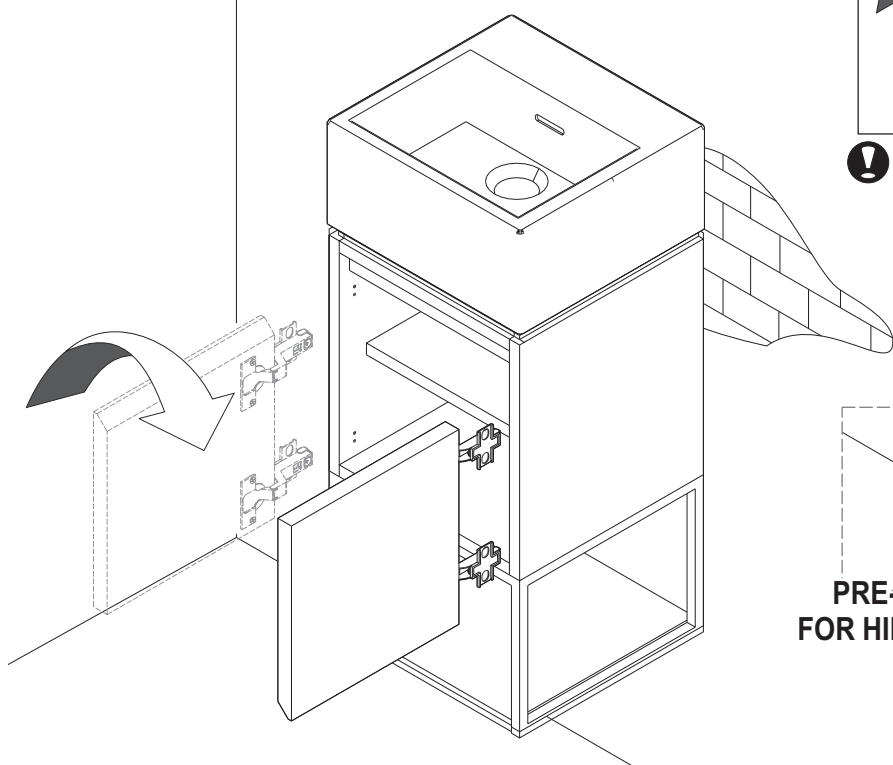


! KEEP THE SCREWS, IT WILL BE NEEDED TO RE-INSTALL THE HINGES LATER

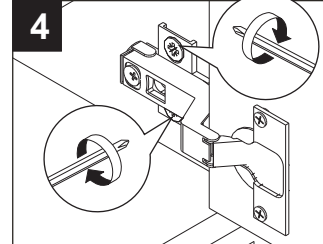
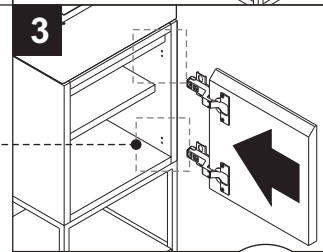
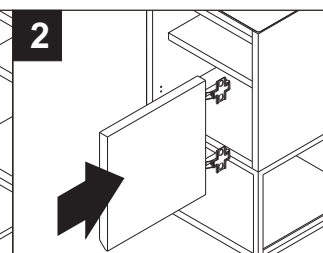


! DOOR HINGES CAN BE ASSEMBLED ON LEFT AND RIGHT SIDE BY RELEASING THE HINGES AND FLIPPING THE DOOR UPSIDE DOWN

B. RE-ATTACHING THE DOOR



! FLIP DOOR UPSIDE DOWN



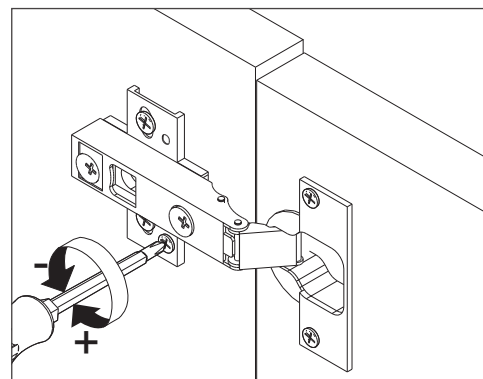
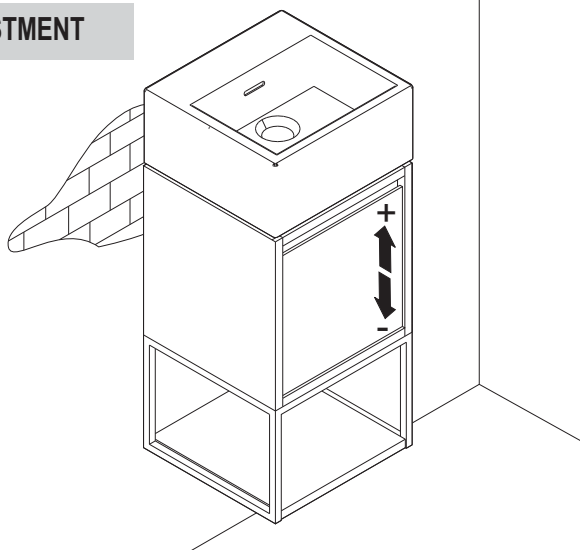
PRE-DRILLED HOLES FOR HINGE INSTALLATION

! TIGHTEN FULLY

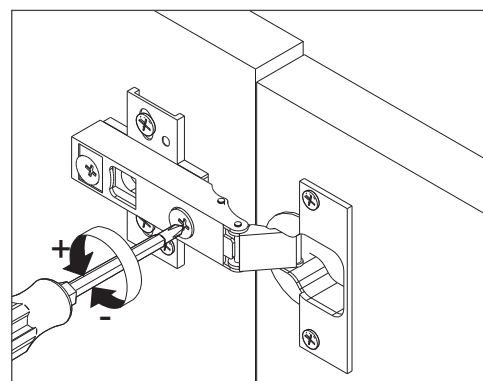
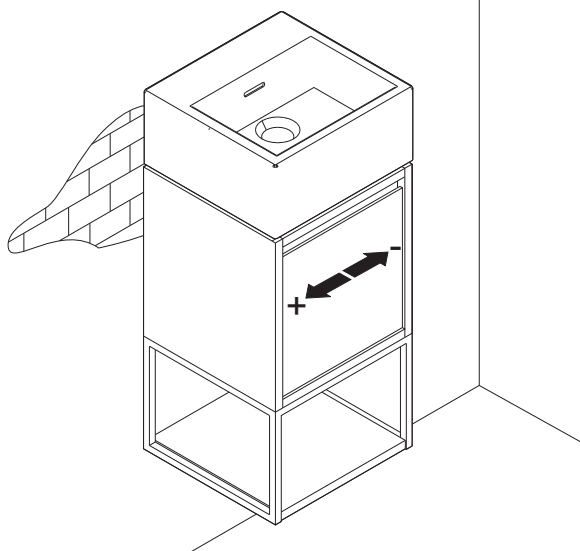
58151 OAK JUNIOR BATHROOM CABINET ASSEMBLY INSTRUCTION FOR HANGING CABINET INSTALLATION

HINGES ADJUSTMENT

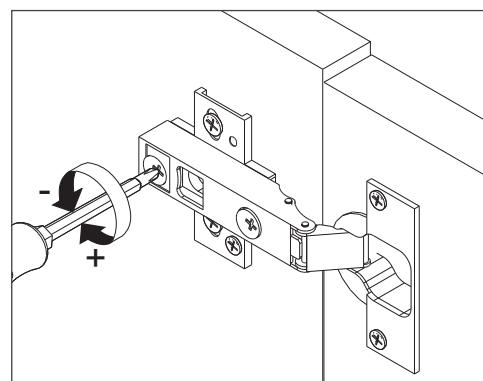
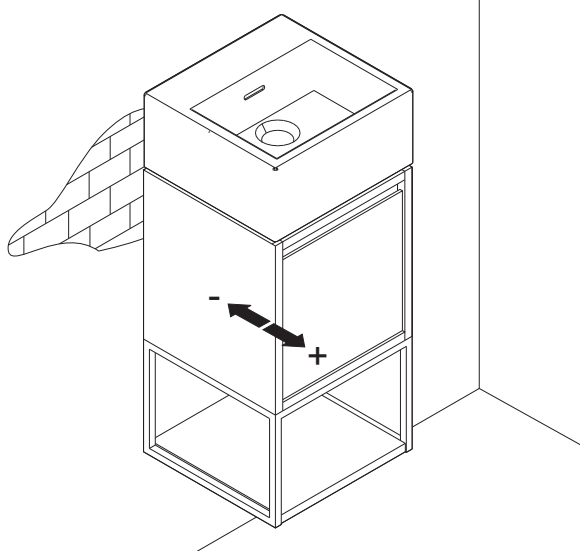
VERTICAL ADJUSTMENT



HORIZONTAL ADJUSTMENT



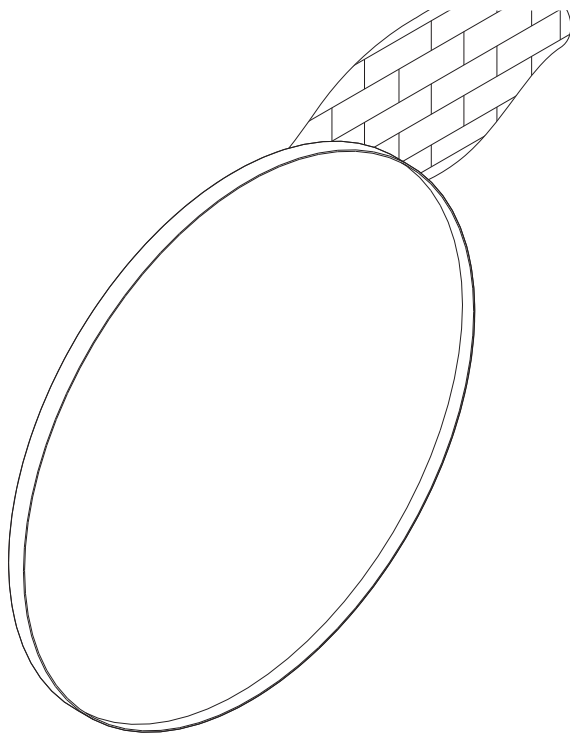
DEPTH ADJUSTMENT



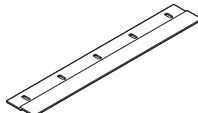
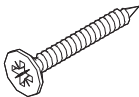
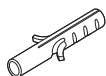
METAL ROUND WALL MIRROR ASSEMBLY INSTRUCTION FOR MIRROR INSTALLATION



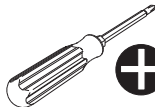

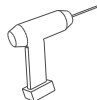
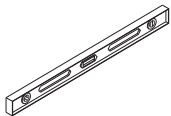
AS WALL MATERIALS VARY, SCREWS FOR FIXING TO WALL ARE NOT INCLUDED. FOR ADVICE ON SUITABLE SCREW SYSTEMS, CONTACT YOUR LOCAL SPECIALISED DEALER.



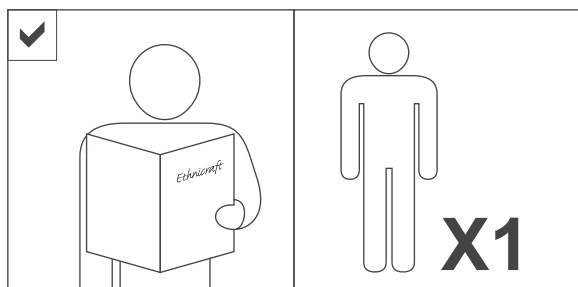
HARDWARES

 IRON HANGER 1 pc	 WALL SCREW 3 pcs (not included in package)
	 WALL PLUG 3 pcs (not included in package)

TOOLS

 SCREWDRIVER (not included in package)	 PENCIL (not included in package)
 DRILLING MACHINE (not included in package)	 SPIRIT LEVEL (not included in package)

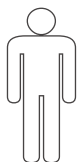
NOTICE



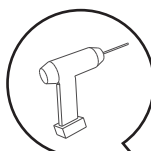
SYMBOLS



DIRECTION



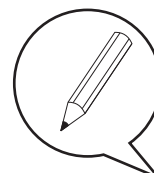
NUMBER OF
PERSON NEEDED



USE DRILLING
MACHINE



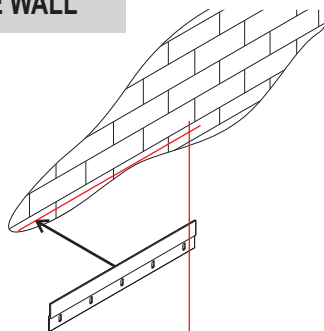
USE SCREWDRIVER
TO TIGHTEN



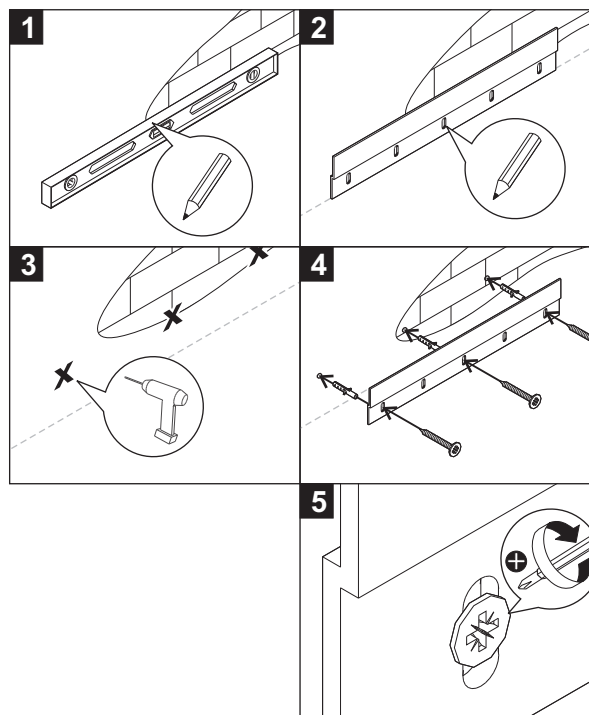
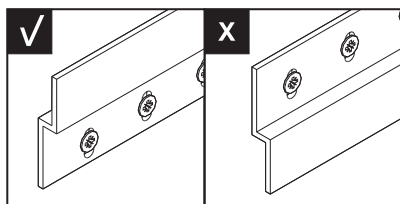
USE PENCIL

METAL ROUND WALL MIRROR ASSEMBLY INSTRUCTION FOR MIRROR INSTALLATION

1 INSTALLING IRON HANGER ON THE WALL



Y cm
(Desired height)



**! ILLUSTRATION WITH
BRICK WALL**

2 HANGING THE MIRROR

